

STRATO 1

ALL-IN-ONE WEATHER STATION

The **Strato 1 weather station** brings **cutting-edge precision** to your farm empowering you with **real-time hyper-local weather** data you can rely on. The all-in-one station comes **pre-assembled** with all the sensors, power, and connectivity included in a compact package **ready to mount!**

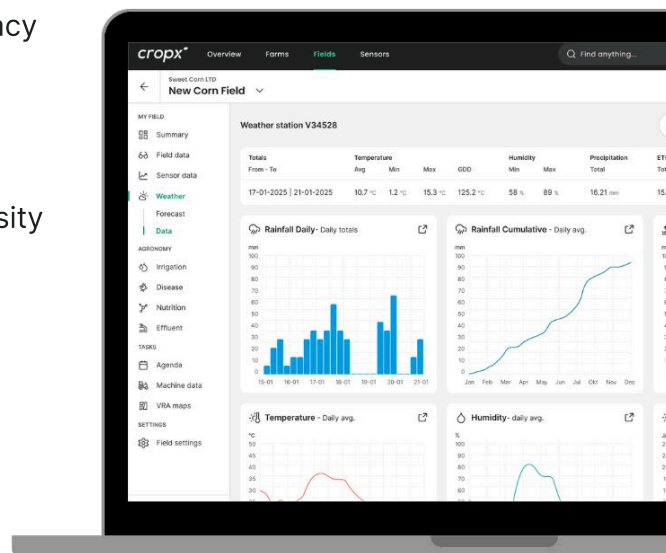
With high quality, high precision components that have been **field tested for 10+ years** worldwide, we give you **peace of mind** that your reliable weather station will stand the harsh elements year after year after year.

An all-inclusive and affordable annual subscription provides **seamless integration into the CropX platform** and **world-class support.**



Key Features

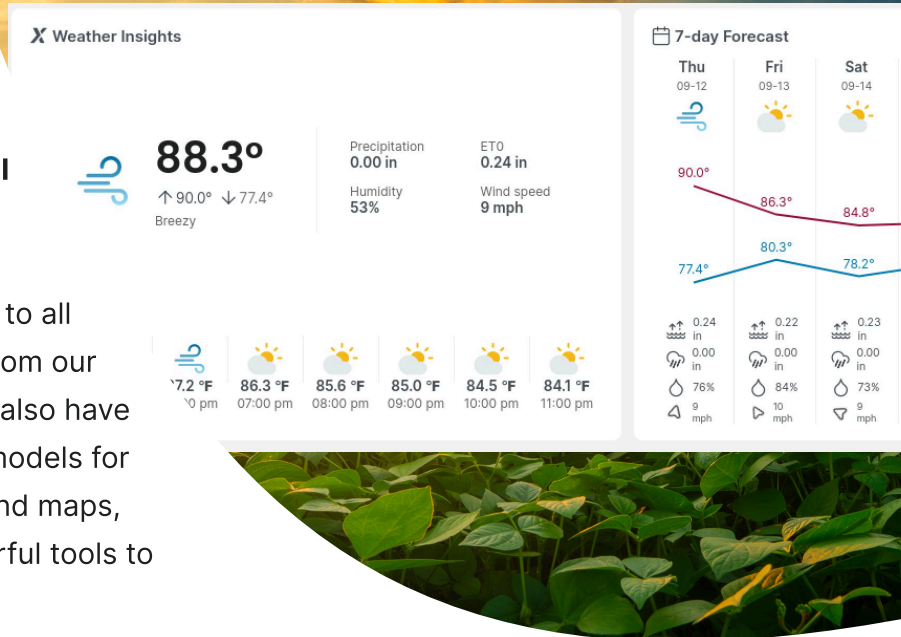
- **Temperature:** -40° to 185° F range with $\pm 0.36^\circ$ F accuracy
- **Humidity:** 0% to 100% range with $\pm 1.8\%$ accuracy
- **Wind Speed:** 0.5 to 45 m/s with ± 0.1 m/s accuracy
- **Wind Direction:** 0° to 359° with $\pm 1^\circ$ RMS at 10 m/s
- **Rainfall:** 0.2 mm per spoon tip with $\pm 2\%$ accuracy, intensity up to 2.4 mm/min
- **Solar radiation:** derived from DTN satellite service
- **Measurement interval:** every 5 to 15 min (configurable)
- **Upload interval:** every 15 to 60 min (configurable)
- **Connectivity:** Includes CropX Telemetry device with cellular connection
- **Power:** Rechargeable, replaceable Li-Ion battery with solar panel for continuous wireless operation



Why Strato 1?

With the Strato 1 weather station from CropX, you gain access to the **most easy-to-use, trusted and complete digital agronomy platform in the world.**

Our mobile and web apps give you access to all the **current and historical weather data** from our station and **7 day detailed forecast.** You'll also have access to CropX's proprietary agronomic models for **crop growth tracking, satellite imagery** and maps, seamless **machine data** import, and powerful tools to create **VRA/VRI prescriptions.**



Designed for Simplicity and Do-It-Yourself

By using the Strato 1, you're empowered with precision weather monitoring, so you can respond quicker to changing conditions, time your spraying, protect your crops, and make data-driven decisions. And you can get started with a simple 4-step installation process that saves you time in field.

- **Install a pole:** Place the pole in the ground at a height of 5 to 6.5 feet for optimal sensor performance and accurate weather data.
- **Mount the Strato 1:** Use the included clamps to firmly attach the Strato 1 to the pole, ensuring it stays in place, regardless of the weather.
- **Attach the rain gauge:** Simply pop on the rain gauge cone. No tools required.
- **Scan the QR Code:** to link the weather station to your CropX farm and fields. You're all set!

The weather data will seamlessly start flowing into the CropX platform and inform the various agronomic models like disease and irrigation.



Learn more about CropX solutions today!
www.cropx.com | support@cropx.com

