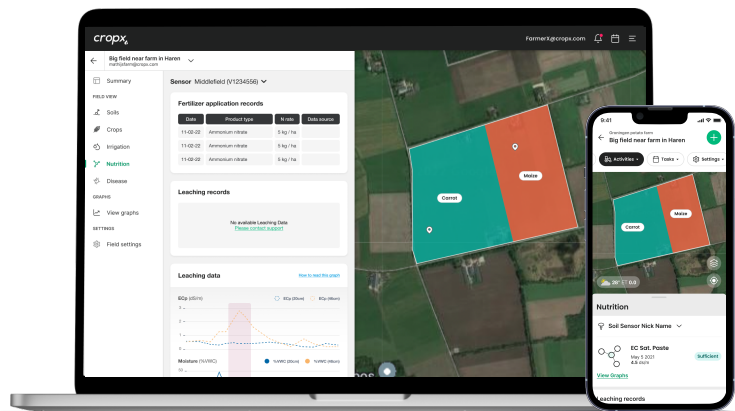




ENSURE SOIL SUPPORTS GROWTH

Nutrition Monitoring

Control costs while maximizing yields with this first-of-its-kind solution for continuously monitoring salinity and nitrogen leaching.



EC Saturated Paste

Evaluates the plant salt and nutritional levels in real time



Leaching Records

Track and report a season-long view of nitrogen leaching events



Leaching Data

Graphical view of the variables that contribute to nitrogen leaching



Salinity Monitoring

Provides real-time measurements of salinity in the soil, allowing users to see salt buildup

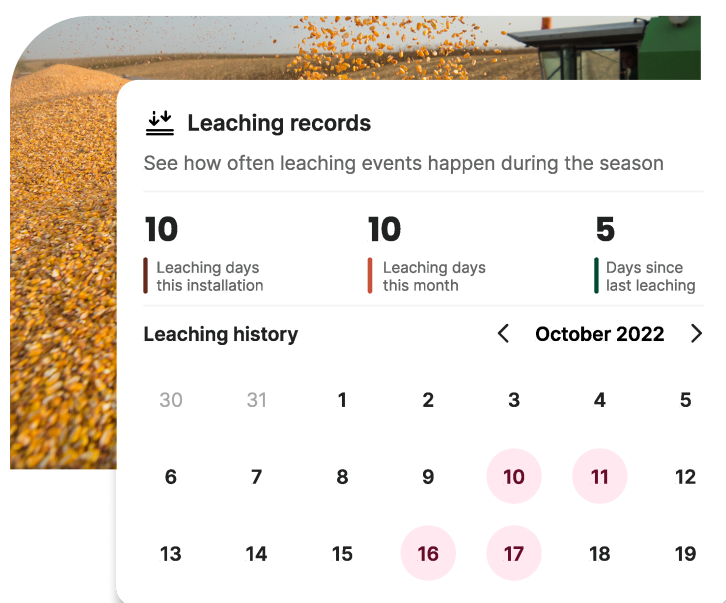
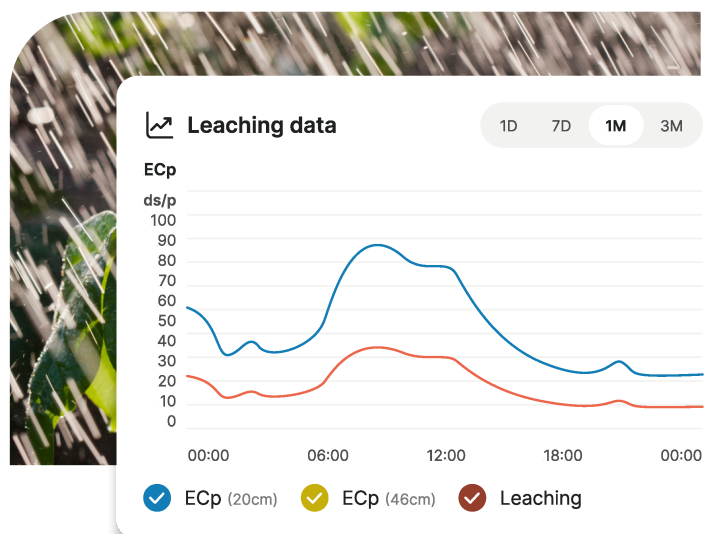


Fertilizer Application Records

Manually enter nitrogen application activities for tracking and record keeping purposes

Continuously Monitor Nitrogen

Monitor plant uptake and utilization of crop nutrients throughout the season. Know what your crop is absorbing, what's available for future uptake, and if nutrients are being lost.

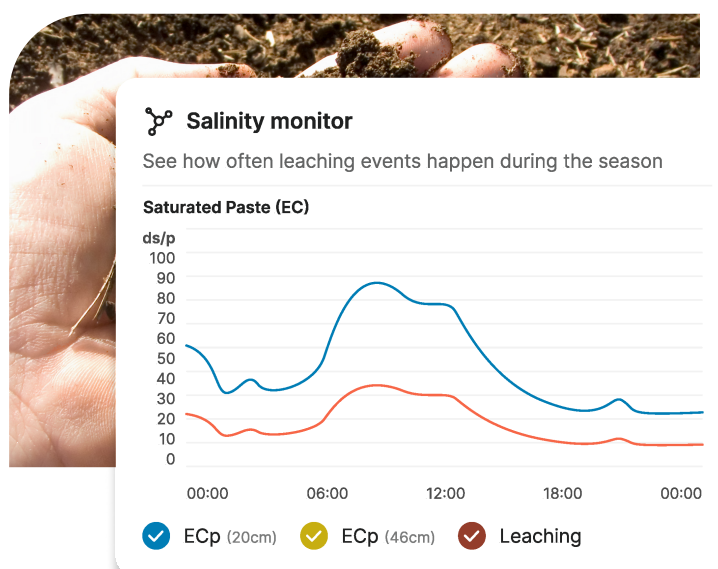


Reduce Impact of Leaching Events

Users can track and report a season-long view of nitrogen leaching events to demonstrate responsible nitrogen management, or establish the conditions that lead to leaching events then make adjustments to prevent future occurrences.

Manage Soil Salinity Levels

This solution for salinity monitoring is easier, less time-consuming, and able to supply immediate results compared to conventional lab soil sample method of measuring the saturated paste EC (electric conductivity).



Learn more about CropX solutions today!

CropX Technologies, support@cropx.com, 888-832-2767