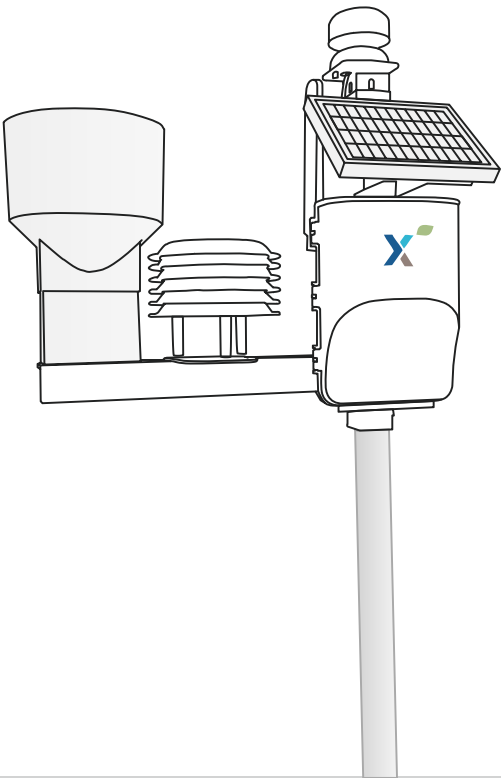


CropX Strato 1 Weather Station

Installation Guide



This guide provides step-by-step instructions for installing a Strato Weather station

****Note:** Prior to installing the weather station, create a CropX account.

New to CropX? Please visit our [Quick Start Guide](#)

Site selection

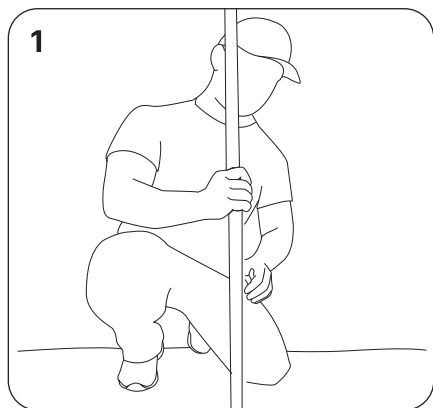
For the measurements to be relevant for a larger area of the farm, the Strato station should not be installed inside a crop or another location that could be considered a micro climate.

It is recommended to install it in an open area, avoiding obstructions like trees, buildings, tall crops or fences that could block or distort rainfall and wind speed. Install on level ground with short grass or natural surfaces to minimize splash-back and wind effects. Ideally the distance to an interfering object should be 10 times its height.

The Strato weather station is shipped with accessoires

A		Pole Set (optional)
B		Bird Spikes, set of 8
C		Micro USB cable
D		Hose clamps

Installation

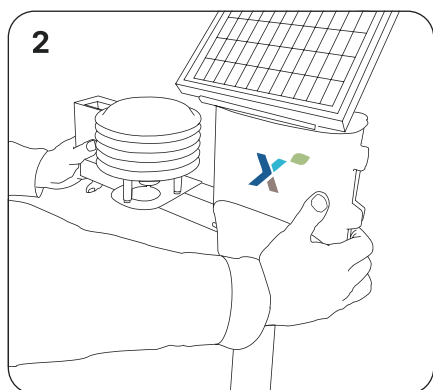


The L shaped spine of the mounting bracket supports installation of the Strato station on both square poles and a wide range of round poles. It can be held in place with straps, but the use of the supplied metal hose clamps is recommended for poles up to 50 mm or 2 inch in diameter.

Securely install the pole in the ground, making sure it's vertical, with top of pole 1,8-2 meter or 6-7 feet high above ground level.

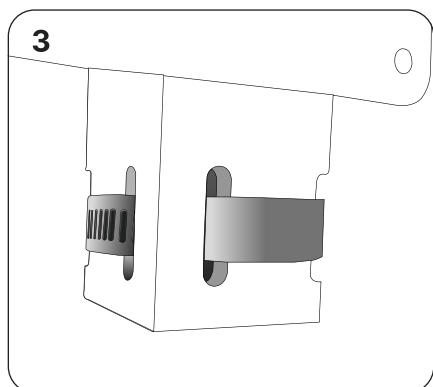
Depending on the stability of the ground, about one third of the poles overall length should be in the ground.

In its final position, the air temperature and humidity sensor should be at around 1,5 meter or 5 feet above ground level.

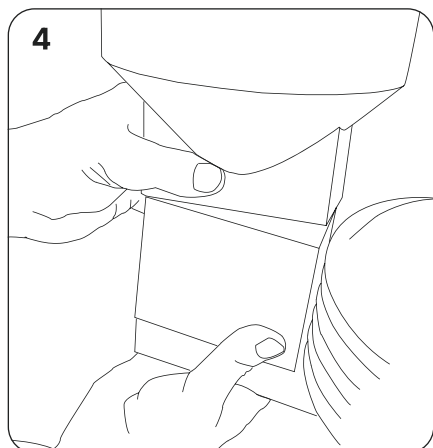


Take the Strato Weather station out of the box, and secure it to the top of the pole with the hose clamps

Note: Make sure to orient the weather station so that the solar panel faces the equator (south in the northern hemisphere, north in the southern hemisphere). This will align the wind direction readings correctly.

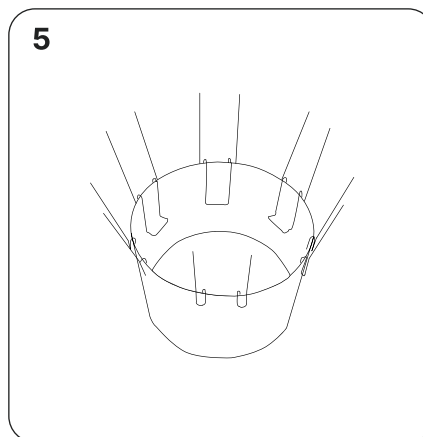


To be able to fit the largest diameter of poles (50mm or 2 inch) with the supplied clamps , the hose clamps needs to be fed through the slots in the L-pole.



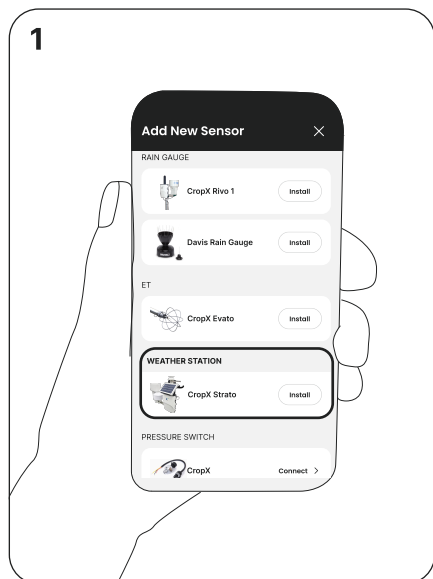
For transport security, the rain gauge spoon is fixated with a rubber band. To remove, pull the red tab and cut the rubber band. Make sure no remains are left that may hinder the movement of the spoon.

Fit rain gauge funnel to the rain gauge base, making sure its top is horizontal.

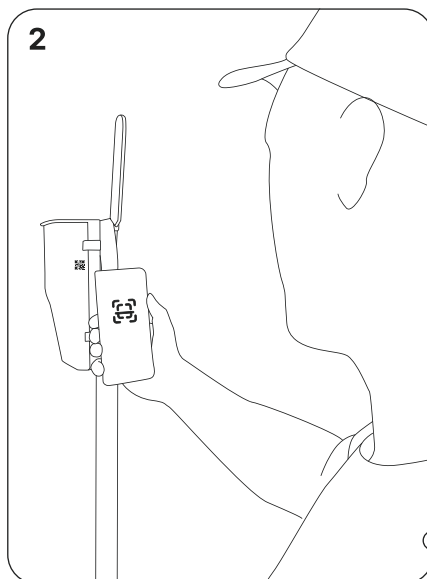


Attach the Birds Spikes with their feet on the inside and space them evenly.

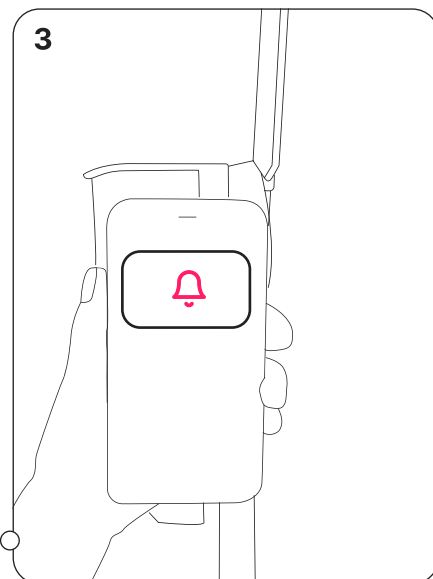
Closing the loop



- Open the CropX mobile app, click the green “+” button, and tap: “Add a sensor”
- Select the **Weather station** from the list and follow the installation instructions on the app.



- Make sure that the CropX app is allowed access to the camera.
- Scan the QR code, using the CropX app. Fill in all the necessary details in the form and click Submit.

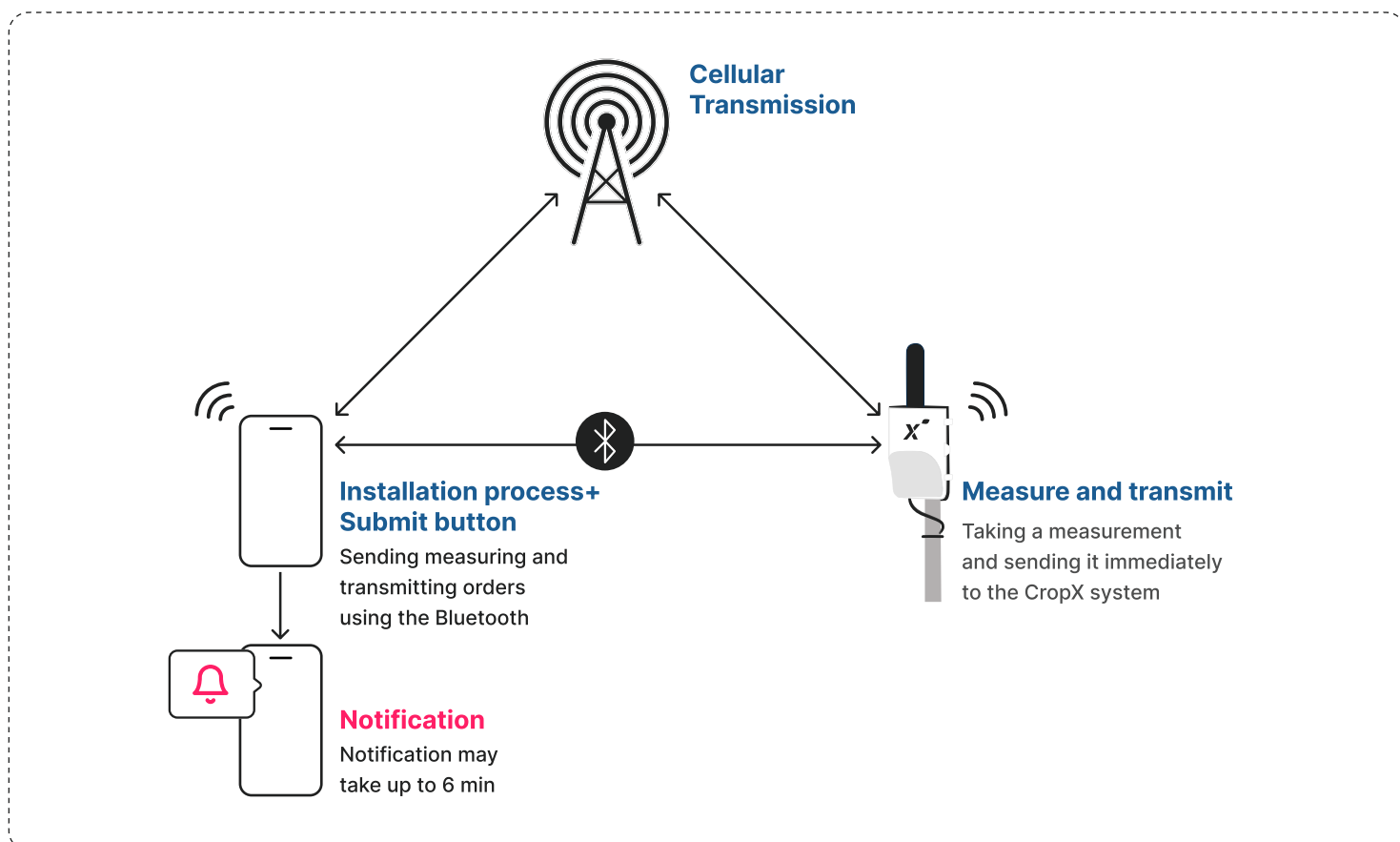


The installation has been completed. In a few minutes you will receive a notification

Transmission verification during installation

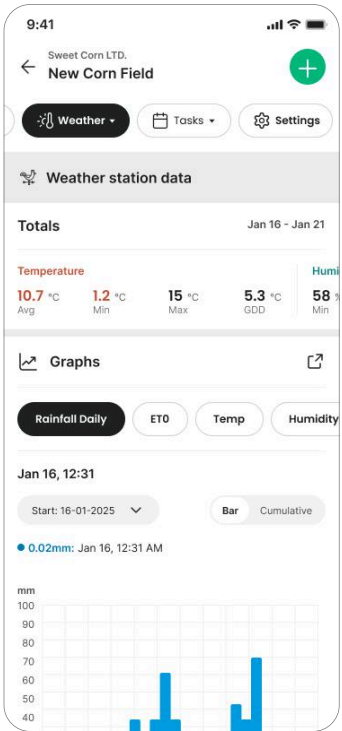
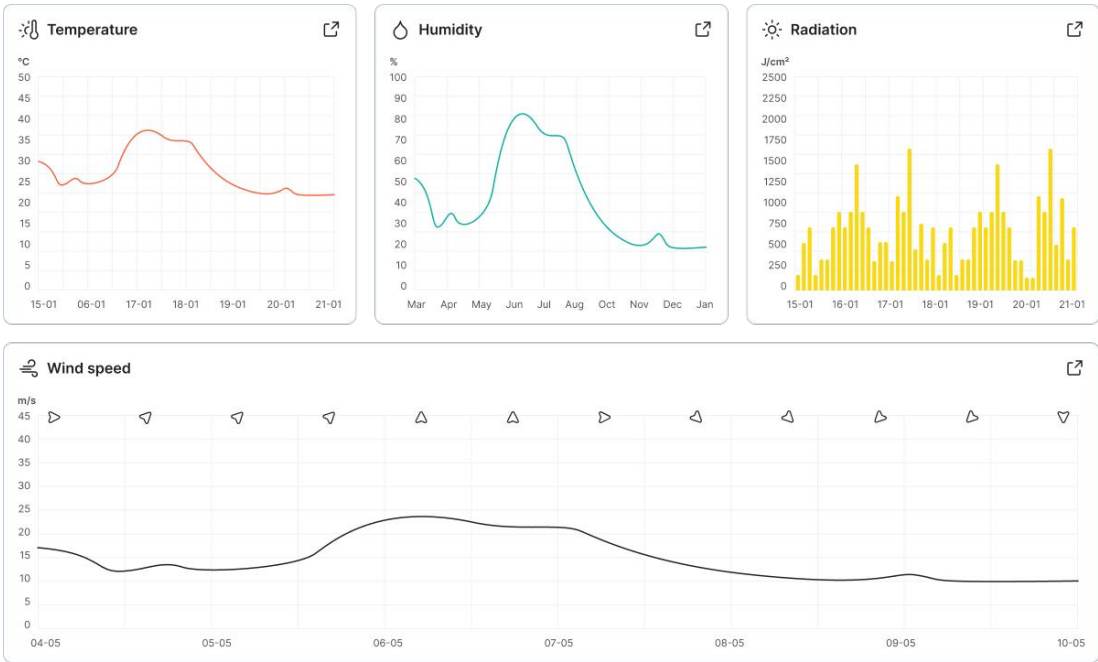
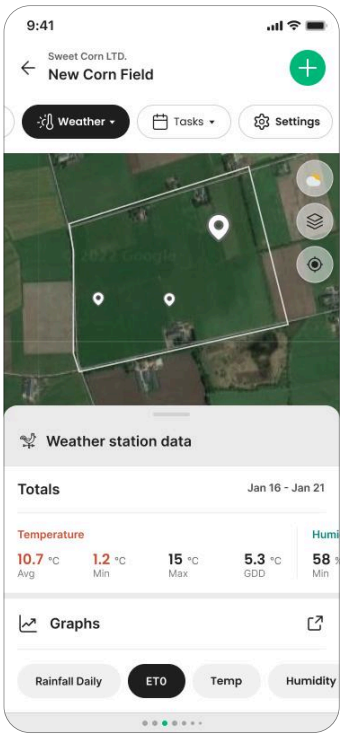
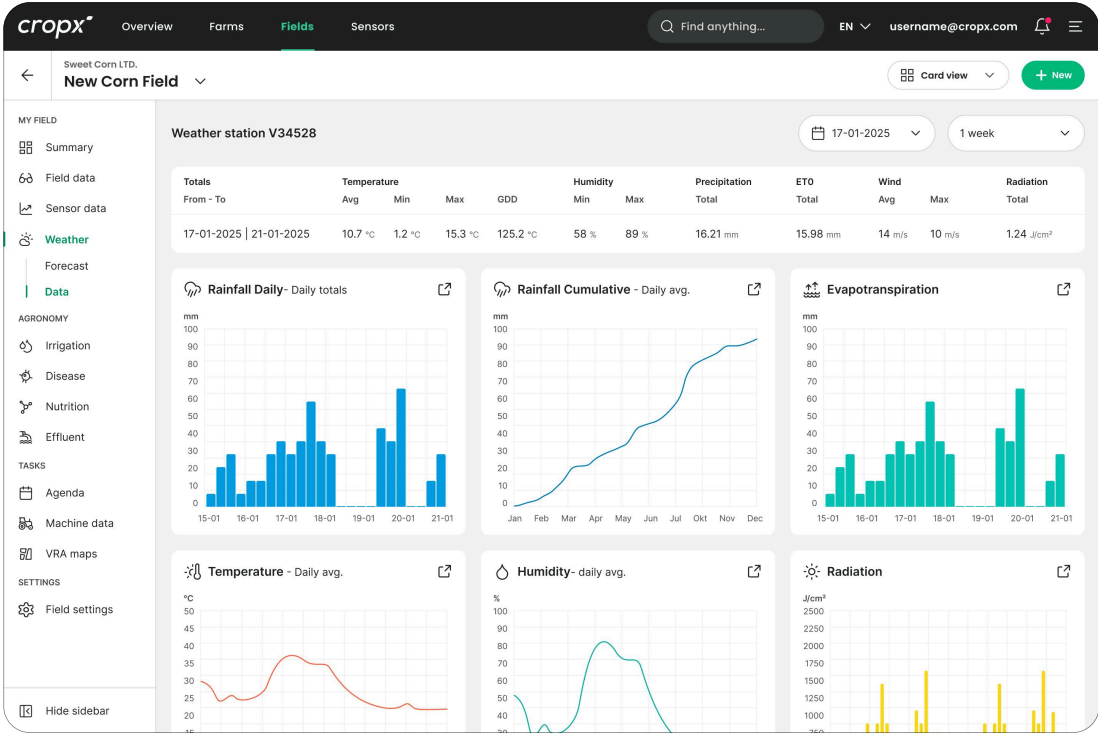
Now, with the help of Bluetooth and cellular communication from the sensor, a signal will be transmitted to the CropX system to verify that the sensor is in a place with cellular coverage and is working properly.

*make sure your BLE service in your mobile device turn on.



View data on CropX web and mobile apps

With an active **CropX subscription**, you can monitor your Weather station(s) from anywhere using CropX web and mobile apps. You can also access other CropX features including weather forecast, satellite imagery, variable rate scripting and more.



CropX Strato Weather Station unit SKU

P/n	Description
CX-STRAT01-B-N	Strato Weather Station CM Telit Next
CX-STRAT01-E-N	Strato Weather Station C1 Telit Next
CX-STRAT01-E-T	Strato Weather Station C1 Telit
CX-STRAT01-E-H	Strato Weather Station C1 Hologram
CX-STRAT01-B-H	Strato Weather Station CM Hologram

Technical Data:

Battery and Power:



Risk of explosion if battery is disassembled by un-authorized personnel



Dispose used batteries according to the local regulations.

3.6 V/10.4 Ah/38.48 Wh (Two Li-Ion battery pack)

Charging at: 5 VDC @ 2A max

Environmental protection:



CropX Strato 1 is designed to comply with IP53

Temperature ranges:

Recommended storage range 14 °F to +77 °F (-10 °C to +25 °C)

Operating range of battery -4 °F to +140 °F (-20 °C to +60 °C)

Proprietary Notice:

All information set forth in this document, all rights to such information, all inventions disclosed herein and any patents that might be granted by employing the materials, methods, techniques, or apparatus described herein are exclusive property of CropX Technologies Ltd., its affiliates and/or its licensors. CropX Technologies Ltd., its affiliates and/or its licensors, as appropriate, reserve all patent, copyrights, and other property rights to this document, including all design, manufacturing, reproduction, use and sales rights thereto, except to the extent said rights are expressly granted to others.

No part of this document may be reproduced, stored in retrieval system, or transmitted in any form or by any means, electronic, mechanical, photocopying, recording, or otherwise, without the prior permission of CropX Technologies Ltd. the information contained herein is designed only for use with the CropX sensor.

CropX Technologies Ltd. is not responsible for any use of this information as applied to any other apparatus.

Copyrights C2019, CropX Technologies Ltd.

DISCLAIMER:

The information contained in this document is subject to change without notice. CropX Technologies Ltd. assumes no responsibility or liability for any errors or inaccuracies contained herein, or for incidental or consequential damage in connection with the furnishing, performance, or use of this guide.

CropX Technologies Ltd. or any of its affiliated entities shall not be liable to the purchaser of this product or third parties for damages, losses, costs, or expenses incurred by the purchaser or third parties as a result of: accident, misuse, or abuse of this product or unauthorized modifications, repairs, or alterations to this product, or failure to strictly comply with CropX Technologies Ltd.'s operating and maintenance instructions.



Text us

Support:
(650)265-0208



Email us

Sales: Sales@cropx.com
Support: Support@cropx.com



Call us

Sales and Support:
US: (650)265-0208
Australia: +61 (3)90704848
New Zealand: +64 (9) 8842588
EU: +31 88 3226601